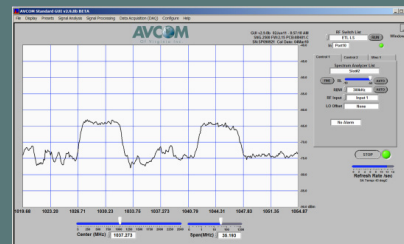


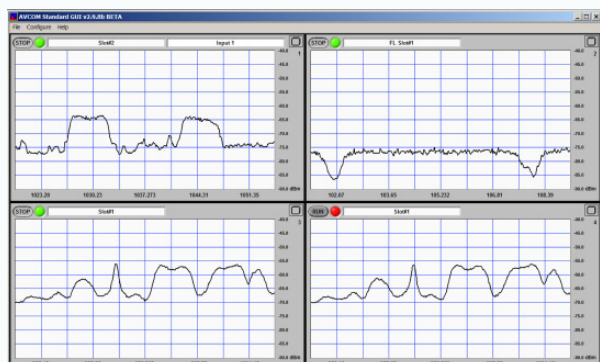
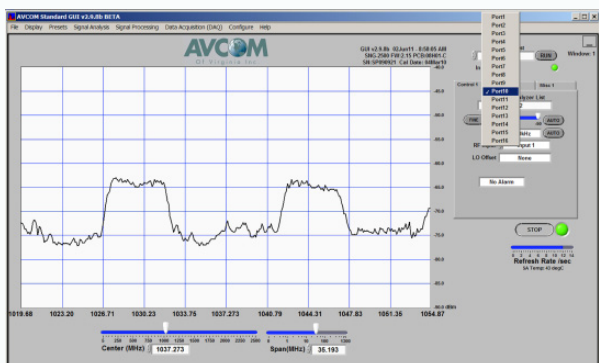
Multi Input Remote Spectrum Analyzer Series



Embedded with an AVCOM Spectrum Analyzer and controlled with the AVCOM GUI



RSA-2150C16S-ETL



As with all of the Avcom GUI's the RSA-2150C16S-ETL will allow the user to setup the system to have multiple screens on one monitor if desired. The unit is supplied with 50 ohm SMA input connectors and is available in 16 and 32 input models.

Applications: General monitoring of carriers for small to large teleports, CATV, Simulcast Antenna Monitoring and Broadcast Stations.

16 Port Spectrum Analyzer

The Avcom RSA-2150C16S-ETL Multi Input Remote Spectrum Analyzer Series was designed specifically for monitoring multiple IF/L-Band feeds. Avcom, in partnership with ETL, has developed a cost effective solution to remotely switch between multiple feeds and monitor each feed using Avcom's remote Graphical User Interface (GUI) software. The RSA-2150C16S-ETL is a compact 1RU solution for applications where rack space is limited. The RSA-2150C16S-ETL can monitor and switch each individual feed from the Avcom GUI. Each input name can be customized by the operator to easily identify the feed needed to be monitored. The Avcom GUI also allows for automated monitoring and alarming of one or several carriers by using the Shape Alarm or the Data Acquisition (DAQ) feature. DAQ allows carrier monitoring from different feed and reports if a carrier falls out of tolerance or recognizes any RF interference. The RSA-2150C16S-ETL has carrier monitoring features that are accessible remotely via Ethernet and found in all Avcom GUI's. Popular features include:

- ✓ Remote Monitoring via Ethernet
- ✓ Intuitive Controls
- ✓ Delta Markers
- ✓ Peak Ride/Peak Hold
- ✓ Min/Max/Envelope Persistence
- ✓ Presets
- ✓ Saving and Recording Waveform Streams
- ✓ Automated fault monitoring with audible, visual, email, and/or SNMP alerts
- ✓ Signal Processing and Analysis
- ✓ Multi-User and Multi-Analyzer Monitoring
- ✓ 6-14/Second Refresh Rates – Typical
- ✓ Low Network Data Rate – 30-70 Kbits/Second - Typical
- ✓ And much more!

RF PARAMETERS

Switch Specifications

Capacity	16 x 1		
Frequency Range	50-2150 MHz (IF/L-band)		
Gain	1.0 dB \pm 1.0 dB nominal, mean across band		
Isolation	I/P - O/P	65 dB	
	I/P - i/P	70 dB	
1 dB Compression	+5 dBm		
Flatness	\pm 1.0 dB		
Noise Figure	17 dB		
Spurious	In Band	<-95 dBm	Typically <-105 dBm
	Out of Band	<-80 dBm	10MHz-3GHz
Input Return Loss	15 dB typical		
Output Return Loss	15 dB typical		

Spectrum Analyzer Specifications (Mil-STD 810F Approved)

Frequency Coverage	5-2500 MHz		
Span Width	0-1300 MHz		
Resolution Bandwidth	10KHz, 100KHz, 300KHz, 1MHz		
RF Sensitivity	0 to -85 dBm		
	w/ preamp 0 to -105 dBm		
Reference Levels	Selectable in 1 or 5 dB steps		
Scale	5 dB/Div		
Dynamic Range	50 dB on Application Window		
Amplitude Accuracy	+/- 1 dB typical		
Frequency Accuracy	+/- 1 KHz typical		

SYSTEM CONTROL

Local Control	Via front panel push buttons
Remote Control	Via rear panel Ethernet (RJ45) Port or USB Port
Display	Front Panel LCD Display
Monitoring	Via AVCOM Graphical User Interface using a PC

ENVIRONMENTAL

Operating Temperature	32 to 113°F
Location	Indoor use only
Storage Temperature	-4 to 75°F
Humidity	85% non-condensing

PHYSICAL

Input Connector	SMA
Input Impedance	50 Ω
Output Connector	SMA
Output Impedance	50 Ω
Dimensions	1U H x 17.7" D x 19" W
Weight	13 lbs
Color	White 00-E-55 semi-gloss

POWER

AC Power	85-264Vac 50/60Hz Fused 2A
LNB Power	None
PSU	Single Mains Inlet
Hot-swap PSU	No

KEY FEATURES

System includes 16x1 switch, spectrum analyzer board and software

Housed in a compact 1U high chassis

Monitoring via Graphical User Interface using a PC

Operates over the 50-2150MHz frequency range