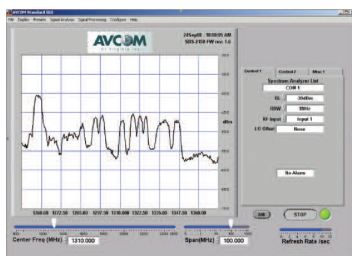


## Single Board Embedded Spectrum Analyzer



## RSA-2500B-SBS

Technical Specifications MIL-STD 810F Approved

Frequency Coverage:	5 MHz – 2,150 MHz
Span Width:	0 - 1300 MHz
Resolution Bandwidth:	10KHz, 100KHz, 300KHz, 1MHz
RF Sensitivity:	Greater than - 85 dBm Typical
Reference Levels:	Selectable - 10 dBm to - 50 dBm in 1 or 5 dB steps
Scale:	5 dB/Div & 2 dB/Div
Dynamic Range:	40 dB on Application Window
Amplitude Accuracy:	+/- 1 dB typical
Frequency Accuracy:	+/- 1KHz typical
Input Connector:	“SMA” Type others available upon request
Size:	5” W x 7” L x 1.5” D
Weight	2 Lbs.
Power Requirements:	+15 to 24 VDC/9W
Display:	Avcom Custom GUI based on National Instruments Labview Platform.

Note: Specifications are based on Avcom control system and graphical user interface and may vary depending on the control system used. Please contact Avcom for specifications based on the selected platform.

Specifications subject to change  
 ©2009 Avcom of Virginia, Inc.  
 RSA-2500B-SBS

- ✓ **Small Compact Design**
- ✓ **Can Be Easily Integrated into Another Product**
- ✓ **Improved Amplitude & Frequency Accuracy**
- ✓ **4 Resolution Bandwidth Selections**
- ✓ **USB, Ethernet & Serial Comms**
- ✓ **Small form factor design**
- ✓ **User Friendly and Intuitive GUI**

### Small Compact Design

The RSA-2500B-SBS is the latest Avcom product designed from the ground up with the system integrator in mind. The compact design measures 5”x7” so that it can easily be integrated into another piece of equipment, inside a small satellite terminal, or as an integral part of the satellite antenna itself. The single board design requires only external +15-24VDC/9W with an extended wide band input (5 MHz to 2500MHz) and is available with USB, Ethernet and Serial communication ports. Please contact Avcom for custom mounting configurations for adapting the RSA-2500B-SBS into your system.

### Improved Performance & Specifications

The new RSA-2500B-SBS was designed for excellent frequency and amplitude accuracy with a wide variety of resolution bandwidth selections ranging from 10kHz to 1MHz. This is required to allow for viewing and monitoring of small TT&C and data carriers found in many satellite communications markets today.

### Versatile Graphical User Interface

The new Avcom Graphical User interface (GUI) is based on the National Instruments Labview Platform and has been customized for several of our customer’s applications. The Avcom GUI will run on the WINDOWS 2000, XP, and Vista platforms and is now also available for Mac. Avcom also offers a multi user version of the software so that multiple users can monitor at the same time. Please contact Avcom for any questions regarding the GUI or if you wish to use your own software with this product.

### Options:

Mounting Bracket Kit