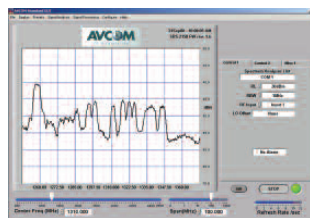


Remote Spectrum Analyzer



Off-Site Carrier
 Monitoring



- ✓ 3 Spectrum Analyzers in a Compact 1RU Chassis
- ✓ Monitor Multiple Signals Simultaneously
- ✓ Improved Amplitude & Frequency Accuracy
- ✓ 4 Resolution Bandwidth Selections
- ✓ USB, Ethernet & Serial Comms
- ✓ User Friendly and Intuitive GUI

TRSA-2500B

Technical Specifications

Frequency Coverage:	5 - 2500 MHz
Span Width:	0 - 1300 MHz
Resolution Bandwidth:	10KHz, 100KHz, 300KHz, 1MHz
RF Sensitivity:	Greater than - 85 dBm Typical
Reference Levels:	Selectable - 10 dBm to - 50 dBm in 1, 2, or 5 dB steps
Scale:	5 dB/Div & 2dB/Div
Dynamic Range:	40 dB on Application Window
Amplitude Accuracy:	+/- 1 dB typical
Input Impedance:	50 Ohms
Frequency Accuracy:	+/- 1KHz typical
Input Connector:	(3) TNC" Type. Others available upon request.
Size:	19" W x 10" D x 1.75" H
Power Requirements:	15v / 22.5W -- 24V / 24W
Display:	Avcom Custom GUI based on National Instruments Labview Platform.

Note: Specifications are based on Avcom control system and graphical user interface and may vary depending on the control system used. Please contact Avcom for specifications based on the selected platform.

Specifications subject to change
 ©2010 Avcom of Virginia, Inc.
 TRSA-2500B

Discreet Inputs in a Compact Design

The TRSA-2500B utilizes (3) Avcom SBS analyzer cards in a single 1RU chassis offering (3) discreet inputs, all of which can be monitored simultaneously. This allows real time monitoring and analysis of the desired signals on a single screen via the Avcom Multi-Gui software which eliminates the need for switching between signals. The TRSA-2500B design requires external +15-24 VDC for power and offers (3) discreet wideband input signals (5MHz to 2500 MHz) and is available with USB, Ethernet and Serial communication ports.

Improved Performance & Specifications

The new TRSA-2500B was designed for excellent frequency and amplitude accuracy with a wide variety of resolution bandwidth selections ranging from 10kHz to 1MHz. This is required to allow for viewing and monitoring of small TT&C and data carriers found in many satellite communications markets today.

Versatile Graphical User Interface

The Avcom Graphical User interface (GUI) is a very versatile and useful tool for the satellite operator and Field Engineer. The Avcom GUI offers the ability to mask a carrier or monitor several carries and sends an audio or visual alarm if a carrier is out of tolerance. The Avcom GUI can also record spectrum streams during an alarm state for playback at a later date. The Avcom GUI also offers features such as waterfall display, peak persistence, peak ride, peak hold, delta markers, presets, S/N measurements and much more.

The Avcom GUI will run in the WINDOWS (2000, XP, Vista, and 7), and Mac platforms. Avcom offers a trial version of the GUI with remote analyzers so that you can try the software before purchasing. Please contact an Avcom representative for more information on the trial software.

For ordering information visit www.avcomofva.com or call 804-794-2500