

"Following the Signal...."



7729 Pocoshock Way, Richmond VA
23235 USA
www.avcomofva.com
+1-804-794-2500

RF Spectrum Analyzers & Monitoring Solutions

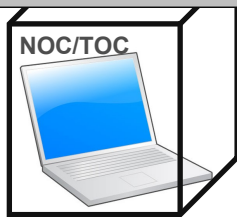
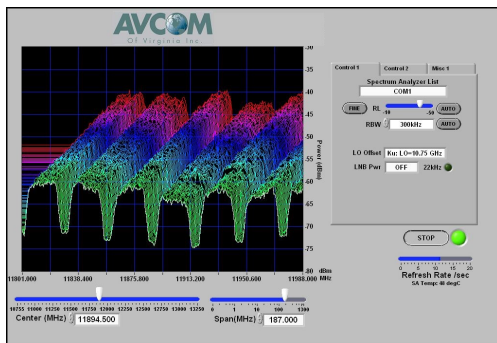
JULY 2017

Remote Uplink/Downlink Monitoring

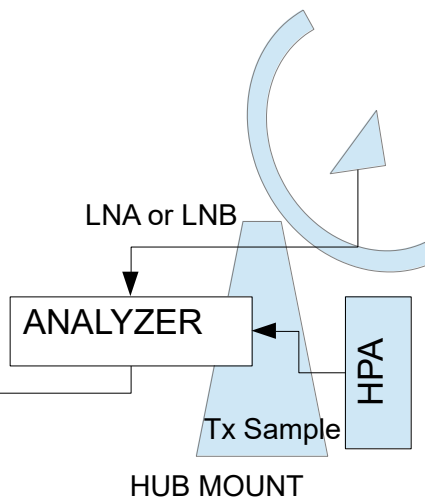
It is now possible to cost-effectively remote monitor spectrum of any SATCOM or DTH antenna system and eliminate coax/IFL.

The CLM-2500-EXT Series Spectrum Analyzers are **HUB-MOUNTED** to provide inputs for uplink and downlink channels. The output is ethernet. Spectrum analyzer can be **monitored and controlled** from up to 10 networked locations with the use of the exclusive Avcom Graphical user interface.

CLM-2500-EXT SERIES Spectrum Analyzer



Ethernet/CAT5



- **INTERFACE WITH M&C SYSTEMS**
- **CONTINUOUS REMOTE 24/365 M & C**
- **SHAPE ALARM REPORTING**
- **SPECTRUM RECORDING**
- **MULTIPLE MARKER & ANALYZER FUNCTIONS**
- **ACCESS FROM 10 LOCATIONS**

Available Frequency Bands:

DBS - 17.3 to 18.3 GHz Input and L-band Input (5-2500 MHz)

Ku-band - 14 to 14.5 GHz input and L-band Input (5-2500 MHz)

C-band - 5.5 to 6.5 GHz Input and L-band Input (5-2500 MHz)

Ka-band Available Upon Request



Ordering Information

Model Designation:

C-band and L-band
CLM-2500-CTX

Ku-band & L-band
CLM-2500-KUTX

DBS & L-band
CLM-2500-DBS