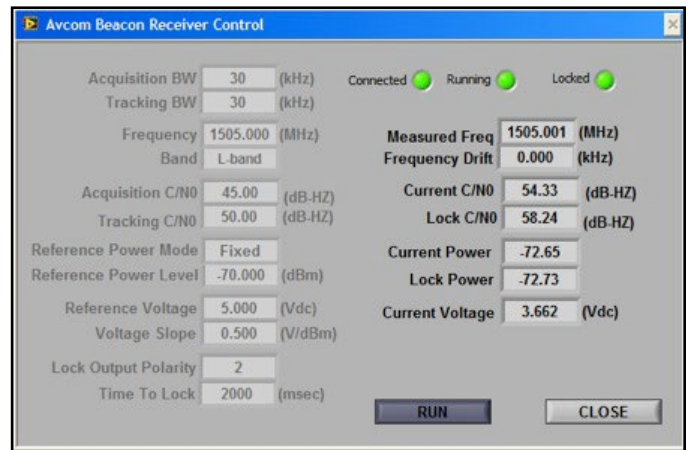
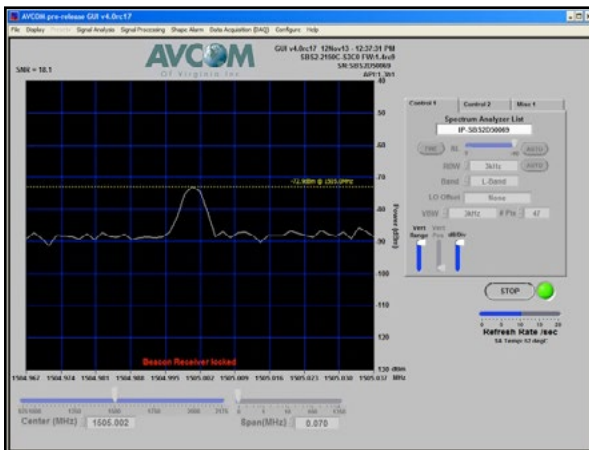


# RBR-2150A

## Rackmount Satellite Beacon Receiver



- Beacon Receiver And Spectrum Analyzer In One Package!
- Highly Flexible Configuration
- One Model Supports Many Applications
- Switch Quickly Between Beacon Receiver And Spectrum Analyzer Modes
- Monitoring & Control (M&C) via Ethernet and USB
- Beacon Receiver support integrated into the Latest Avcom GUI
- Comprehensive API for Easy Integration
- Extended Temperature Range



### RBR Beacon Receiver, Rack Mount

The RBR Series is a Beacon Receiver based on the high-performing single-board Spectrum Analyzers and Beacon Receiver (SBS) products. Avcom has integrated the SBS product into a standard 19" rack enclosure. The RBR product provides same high performance of the MIL-spec compliant SBS module product in a convenient rack enclosure, all at a cost effective price. This enables the user to install the RBR in any standard 19" rack system and access the spectrum analyzer and beacon receiver functions via the included software GUI over IP.

## TECHNICAL SPECIFICATIONS

RF	
<b>INPUT CONNECTOR:</b>	BNC standard. N, TNC, F, & SMA available.
<b>INPUT FREQUENCY RANGE:</b>	950 to 2150MHz
<b>TUNING STEP SIZE:</b>	1kHz
<b>INPUT LEVEL RANGE:</b>	0 to -115dBm
<b>MAXIMUM INPUT POWER LEVEL:</b>	+10 dBm max
<b>DETECTION BANDWIDTH:</b>	10 to 750 kHz
<b>TRACKING BANDWIDTH:</b>	10 to 120 kHz
<b>DETECTED BEACON LEVEL FILTERING:</b>	Low-Pass, 0.5 Hz, fixed

## TECHNICAL SPECIFICATIONS

PERFORMANCE	
SEARCH/TRACK RATE:	10 Hz
ACQUISITION TIME:	<2 second typical
ADJUSTABLE DELAY BEFORE LOCK:	0 to 5000 milliseconds
BEACON TYPE:	CW, BPSK
ACQUISITION/TRACKING LEVEL:	
User Bandwidth	RBW Filter
≤ ± 37 kHz	3kHz
≤ ± 92 kHz	10kHz
≤ ± 375 kHz	30kHz
Min C/No	40 dB-Hz
	44 dB-Hz
	48 dB-Hz
M & C	
ETHERNET:	10/100 Auto, RJ-45 and 8-pin header
IP ADDRESS:	DHCP or Static
USB:	Type-B
INCLUDED CONTROL APPLICATION:	Avcom GUI (Windows)
APPLICATION PROGRAMMING INTERFACE (API):	POSIX-compliant 'C' Pre-built Libraries for Windows and Linux x86 Source code available
PROTOCOL:	High-reliability closed-loop with error checking
RECEIVER OUTPUT VIA PHYSICAL OUTPUTS?	Yes
RECEIVER OUTPUT VIA M&C INTERFACE:	Yes
RECEIVER OUTPUTS	
CONNECTOR:	Analog: BNC, Lock: DB-9
ANALOG SIGNAL STRENGTH INDICATOR OUTPUT LEVEL:	0 to 10 VDC, 5 mA max to maintain linearity
ANALOG SLOPE:	0.25 to 2.5 Volts/dB
ANALOG SLOPE POLARITY:	Positive or Negative
ANALOG OUTPUT FILTERING:	Low-Pass, 0.5 Hz, fixed
DIGITAL LOCK INDICATOR OUTPUT:	0 to 3.3 VDC
DIGITAL LOCK INDICATOR OUTPUT POLARITY:	Adjustable (H=LOCK or L=LOCK)
POWER	
CONNECTOR:	2.1mm DC
POWER SUPPLY:	15 VDC, 7W
PHYSICAL	
DIMENSIONS:	19"W x 18"L x 1.75"H
WEIGHT:	7lbs
ENVIRONMENTAL	
OPERATING TEMPERATURE:	-20 to +60C
STORAGE TEMPERATURE:	-40 to +85C
HUMIDITY:	0 to 95%, non-condensing

Specifications subject to change. ©2015 Avcom of Virginia, Inc. v120114