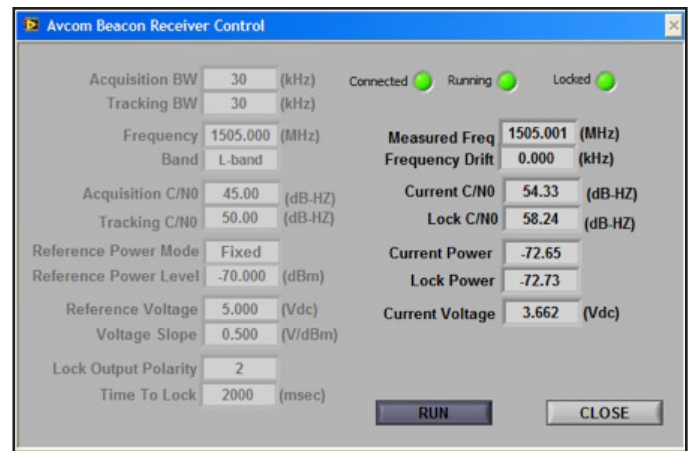
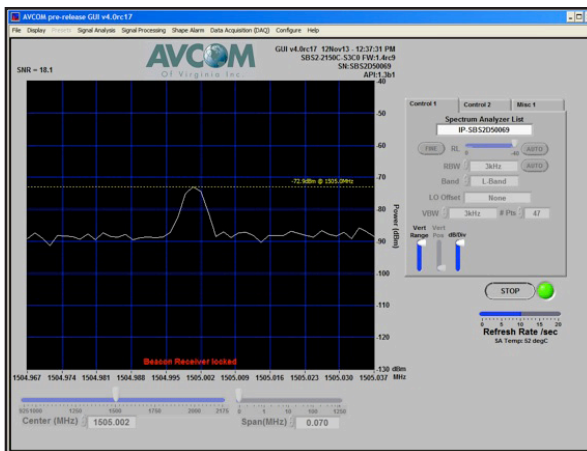


SBS2-2150E-S3CO-B

Satellite Beacon Receiver



- Beacon Receiver And Spectrum Analyzer In One Package!
- Switch Quickly Between Beacon Receiver And Spectrum Analyzer Modes
- Increased Sensitivity and Dynamic Range Over SBS2-2150C
- Compact, Rugged Design Perfect for Integration in Transportable Applications
- Monitoring & Control (M&C) via Ethernet and USB
- Beacon Receiver Support Integrated Into the Latest Avcom GUI
- Comprehensive API for Easy Integration
- Extended Temperature Range
- Low SWaP (Size, Weight, and Power)
- Rack Mount Option For Fixed Antenna And Teleport Applications
- Track Conventional Beacon Signal or Track Power Level of Carrier



TECHNICAL SPECIFICATIONS

RF

INPUT CONNECTOR:	SMA, 50 Ohm
INPUT FREQUENCY RANGE:	950 to 2150MHz
TUNING STEP SIZE:	1kHz
INPUT LEVEL RANGE:	0 to -115dBm
MAXIMUM INPUT POWER LEVEL:	+10 dBm max
DETECTION BANDWIDTH:	10 to 750 kHz
TRACKING BANDWIDTH:	10 to 150 kHz
DETECTED BEACON LEVEL FILTERING:	Low-Pass, User-Selectable: 0.25 Hz, 0.5 Hz, 1.0 Hz, 2.0 Hz, 3.0 Hz

TECHNICAL SPECIFICATIONS

PERFORMANCE			
SEARCH/TRACK RATE:	User-Selectable: 10 Hz, 25Hz		
ACQUISITION TIME:	<1 second typical		
ADJUSTABLE DELAY BEFORE LOCK:	0 to 5000 milliseconds		
BEACON TYPE:	CW, BPSK (No Demodulation)		
ACQUISITION/TRACKING LEVEL:	User Bandwidth	RBW Filter	Min C/No
	≤ ± 37 kHz	3kHz	40 dB-Hz
	≤ ± 92 kHz	10kHz	44 dB-Hz
	≤ ± 375 kHz	30kHz	48 dB-Hz
M & C			
ETHERNET:	10/100 Auto, RJ-45 or 8-pin header		
IP ADDRESS:	DHCP or Static		
USB:	Type-B and 3-pin header		
INCLUDED CONTROL APPLICATION:	Avcom GUI (Windows)		
APPLICATION PROGRAMMING INTERFACE (API):	POSIX-compliant 'C' Pre-built Libraries for Windows and Linux x86 Source code available		
PROTOCOL:	High-reliability closed-loop with error checking		
RECEIVER OUTPUT VIA PHYSICAL OUTPUTS:	Yes		
RECEIVER OUTPUT VIA M&C INTERFACE:	Yes		
RECEIVER OUTPUTS			
CONNECTOR:	6-pin header (pigtail supplied)		
ANALOG SIGNAL STRENGTH INDICATOR OUTPUT LEVEL:	0 to 10 VDC, 50 mA max		
ANALOG SLOPE:	0.1 to 3.0 Volts/dB		
ANALOG SLOPE POLARITY:	Positive or Negative		
ANALOG OUTPUT FILTERING:	Low-Pass, 0.5 Hz, fixed		
DIGITAL LOCK INDICATOR OUTPUT:	0 to 3.3 VDC		
DIGITAL LOCK INDICATOR OUTPUT POLARITY:	Adjustable (H=LOCK or L=LOCK)		
POWER			
CONNECTOR:	2-pin Header. Pigtail supplied.		
POWER SUPPLY:	15 to 24 VDC, 7W		
PHYSICAL			
DIMENSIONS:	3.75"(9.525cm) W x 5.75"(14.605cm) L x 1.1"(2.794cm) D		
WEIGHT:	0.8lbs/360g		
ENVIRONMENTAL			
OPERATING TEMPERATURE:	-40°C to 70°C		
STORAGE TEMPERATURE:	-40°C to 85°C		
HUMIDITY:	0 to 95%, non-condensing		
OPERATING ALTITUDE:	10,000 ft		

Specifications subject to change. ©2018 Avcom of Virginia, Inc. Rev1 v043019